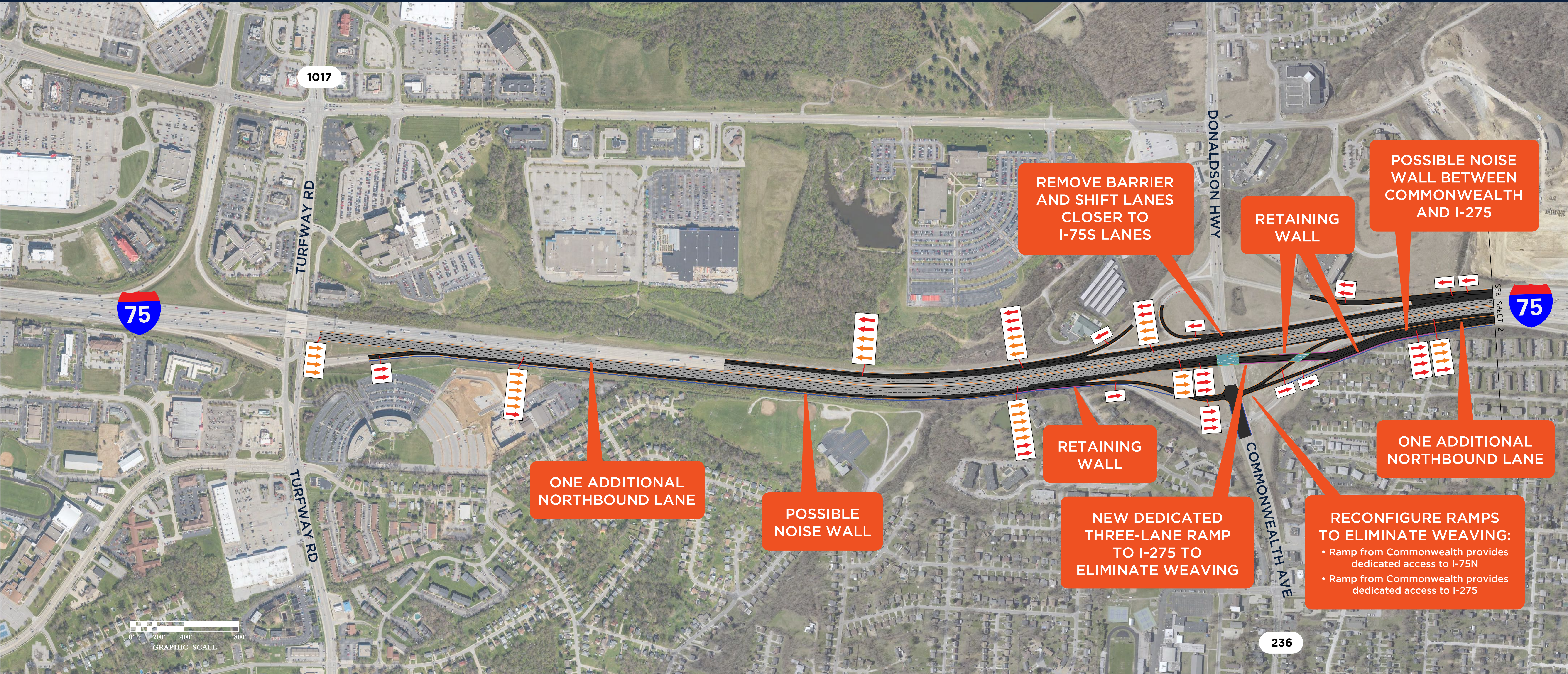




75275INTERCHANGE

CONCEPT 4

(Sheet 1 of 5)



BURGESS & NIPLE

I-75, TURFWAY ROAD TO DONALDSON HWY/COMMONWEALTH AVE

I-71/I-275 Interchange Improvements Scoping Study

LEGEND

- RETAINING WALL
- POSSIBLE NOISE WALL
- EXISTING PAVEMENT TO REMAIN
- FULL DEPTH PAVEMENT
- PROPOSED BRIDGE WORK
- EXISTING LANES TO REMAIN
- PROPOSED LANES